

MAX DUTY

AIR DISC • FLEET • HEAVY DUTY • MEDIUM DUTY



*Higher Return On
Mileage Per Dollar*



*Superior Performance,
Quiet And Clean*



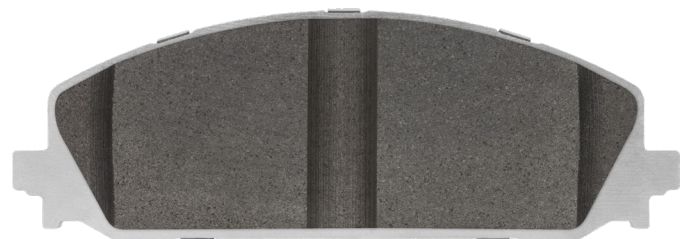
*North American
Manufactured*



COVERAGE FOR FLEET, HEAVY DUTY, EMERGENCY SERVICES AND MUNICIPALITY VEHICLE

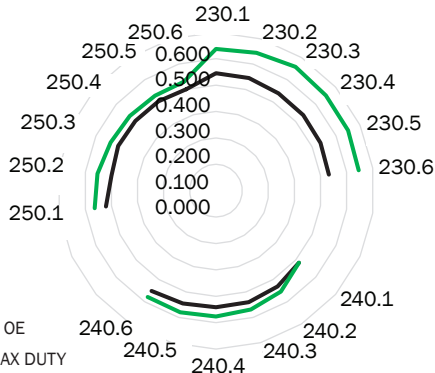
- 74 part numbers applicable for fleet, emergency, municipality and other vehicles that just work hard
- Exceeds FMVSS performance standards
- Road proven performance from the extreme service duty of police pursuit vehicles, emergency response vehicles, industrious work trucks and the reliability of school bus transportation
- **Increases rotor service life** – fast heat transfer extends pad life, delivers more consistent braking and reduces fade
- Max Duty brake pads are responsive and dependable
- 100% Manufactured in North America

New Late Model Applications Available



MAX DUTY

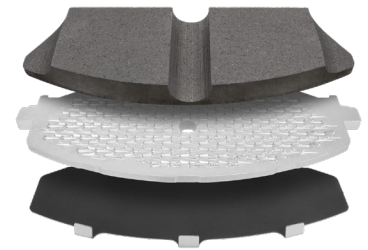
4th Effectiveness mu - Max Duty SAE J2784 on the F250/350 Platform



The fourth effectiveness section of J2784 measures brake effectiveness at three different speeds with a GVWR load. Mu is the coefficient of friction and is a measure of a material's effectiveness. This chart shows how the Max Duty material behaves similar to the OE, but with a higher coefficient of friction.

Your Replacement Solution For Total Performance

- Excellent on-fleet usage
- Quiet and exceptional wear
- School bus fleets using today with great results
- Made in North America assures consistency and high quality materials



PART #	LOC	FROM YR	TO YR	POPULAR APPLICATIONS
RAM769	F/R	1996	2022	Blue Bird; Chevrolet/GMC: Ford; Freightliner; Hino; IC Bus; Isuzu; Workhorse
RAM784	F	1999	2020	Chevrolet/GMC Vans and Pickups; Hummer H2 (03-09)
RAM786	F/R	1998	2021	Blue Bird; Ford; Freightliner/Thomas Bus; IC Bus; KW/Peterbilt; Workhorse
RAM825	F	1997	2021	Chevrolet/GMC: LCF, Tiltmaster; Isuzu: NPR, NPR-HD, NQR, Reach
RAM827	F	1997	2021	Chevrolet/GMC: LCF, Tiltmaster; Isuzu: FTR, NPR, NPR-HD, NQR, NRR
RAM1066	F/R	2005	2021	Ford; IC Corp: AC Commercial Bus; International: CF500/600, TerraStar
RAM1317	F	2007	2018	Dodge/Freightliner/Mercedes-Benz: Sprinter 2500, 3500
RAM1328	F	2008	2023	Ford: E-150, E-250SD, E-350SD, E-450 SD
RAM1330	R	2008	2022	Ford: E-450 Super Duty
RAM1335	F	2008	2021	Dodge: Ram 4500, Ram 5500
RAM1363	F	2007	2020	Chevrolet/GMS: Pickups and SUVs
RAM1411	F/R	2009	2020	Chevrolet/GMC: Vans and Pickups
RAM1414	F	2010	2018	Ford: Expedition, F-150; Lincoln: Navigator
RAM1683	F	2012	2020	Hino: 195
RAM1693	F	2007	2021	Dodge/Freightliner/Mercedes-Benz: Sprinter 2500; MB Metris
RAM1695	F	2012	2017	Hino: 155
RAM1842	F	2015	2021	Ram: ProMaster 2500, ProMaster 3500
RAM2018	F	2017	2022	Ford: F-450 Super Duty, F-550 Super Duty